



Who we are

A leading global mining company focused on the responsible production of copper, premium iron ore and crop nutrients – **future-enabling products that are essential for decarbonising the global economy, improving living standards, and food security.**



Mines are built where the minerals are - and become part of the landscape

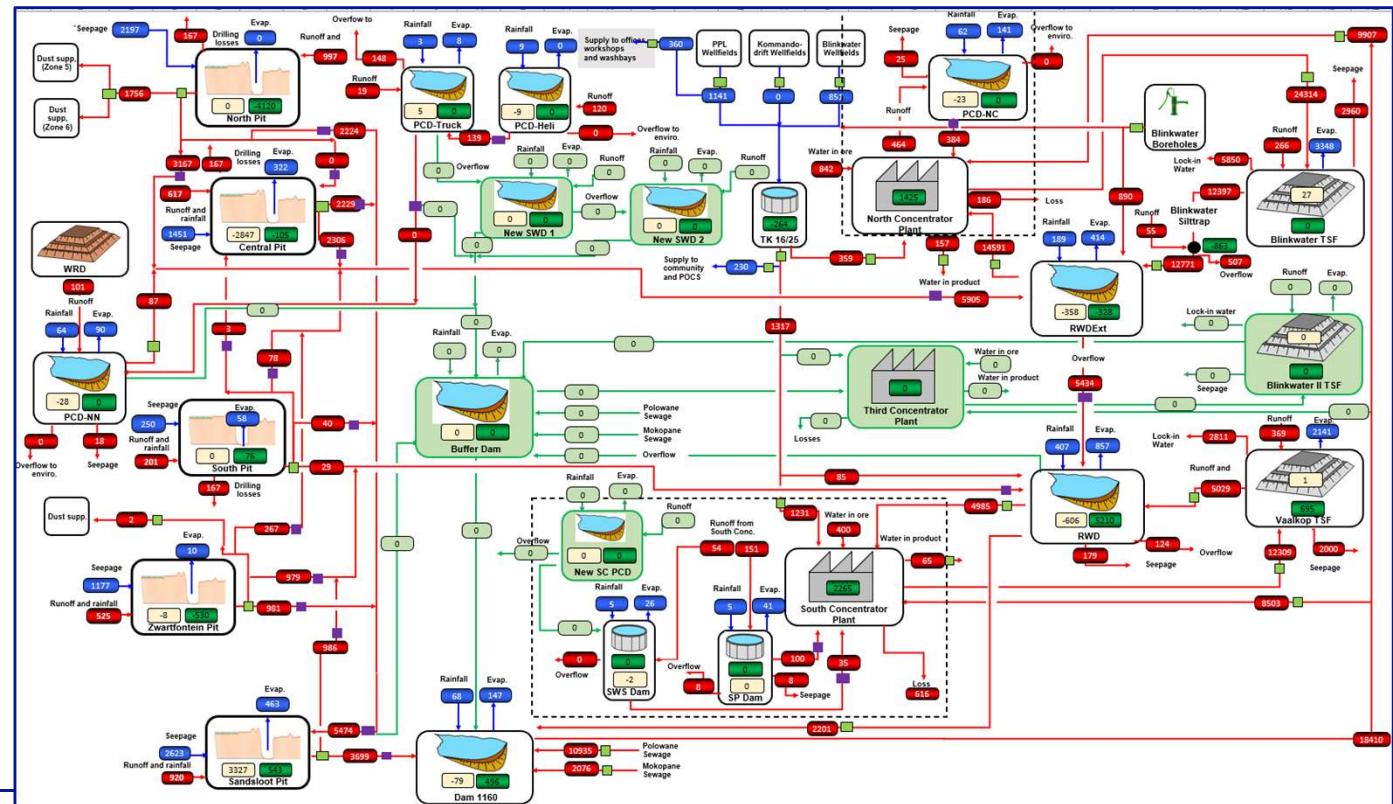
Excellence in mine water management is critical for business continuity, safety, the environment and communities



Mines manage water at a greater scale than other industries

This is reflected in the infrastructure required, and complex site water balances

We can't stop inputs from rainfall and groundwater or losses through evaporation and seepage – we have to manage it



Machine learning enables better water balance models

We model different climatic scenarios, and climate change at site and catchment level for planning and decision making

