



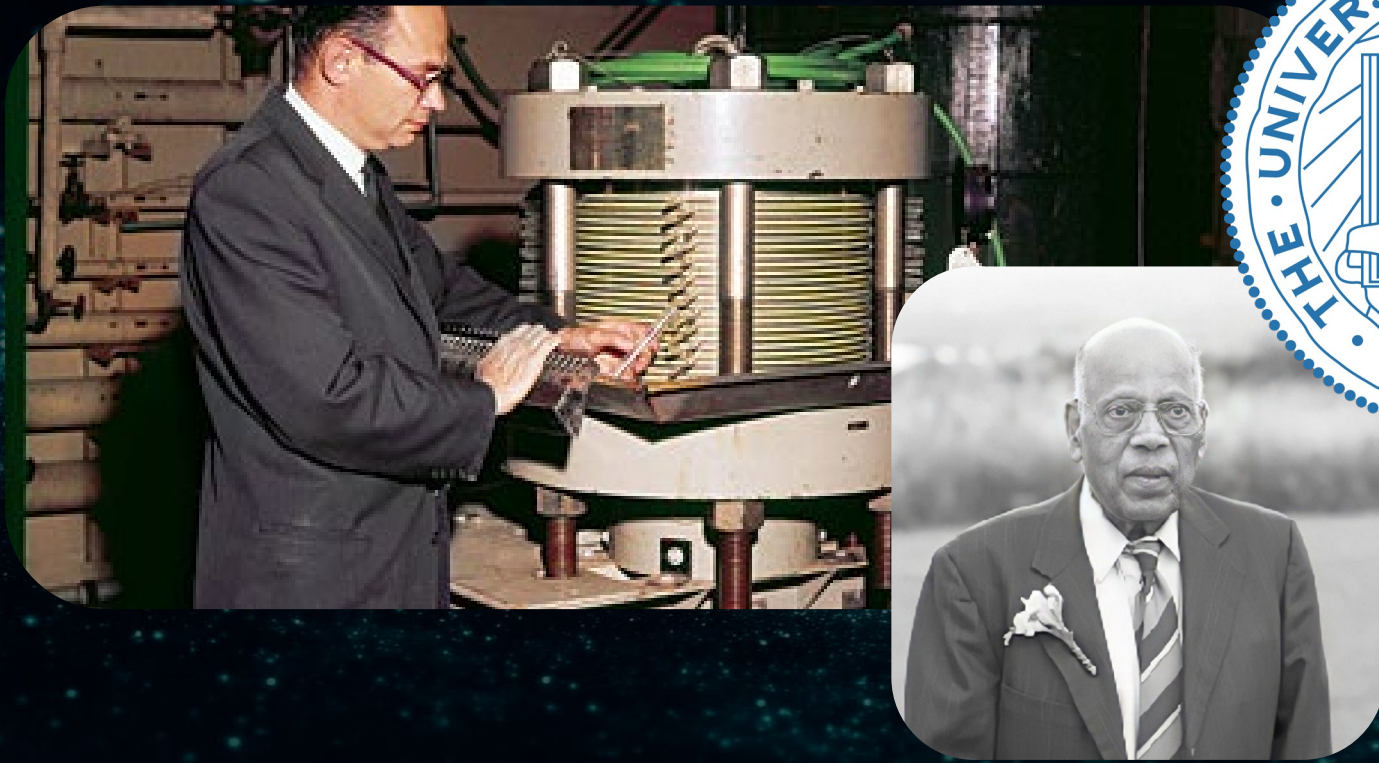
NEXT TFX™

Revolutionizing Desalination



97%

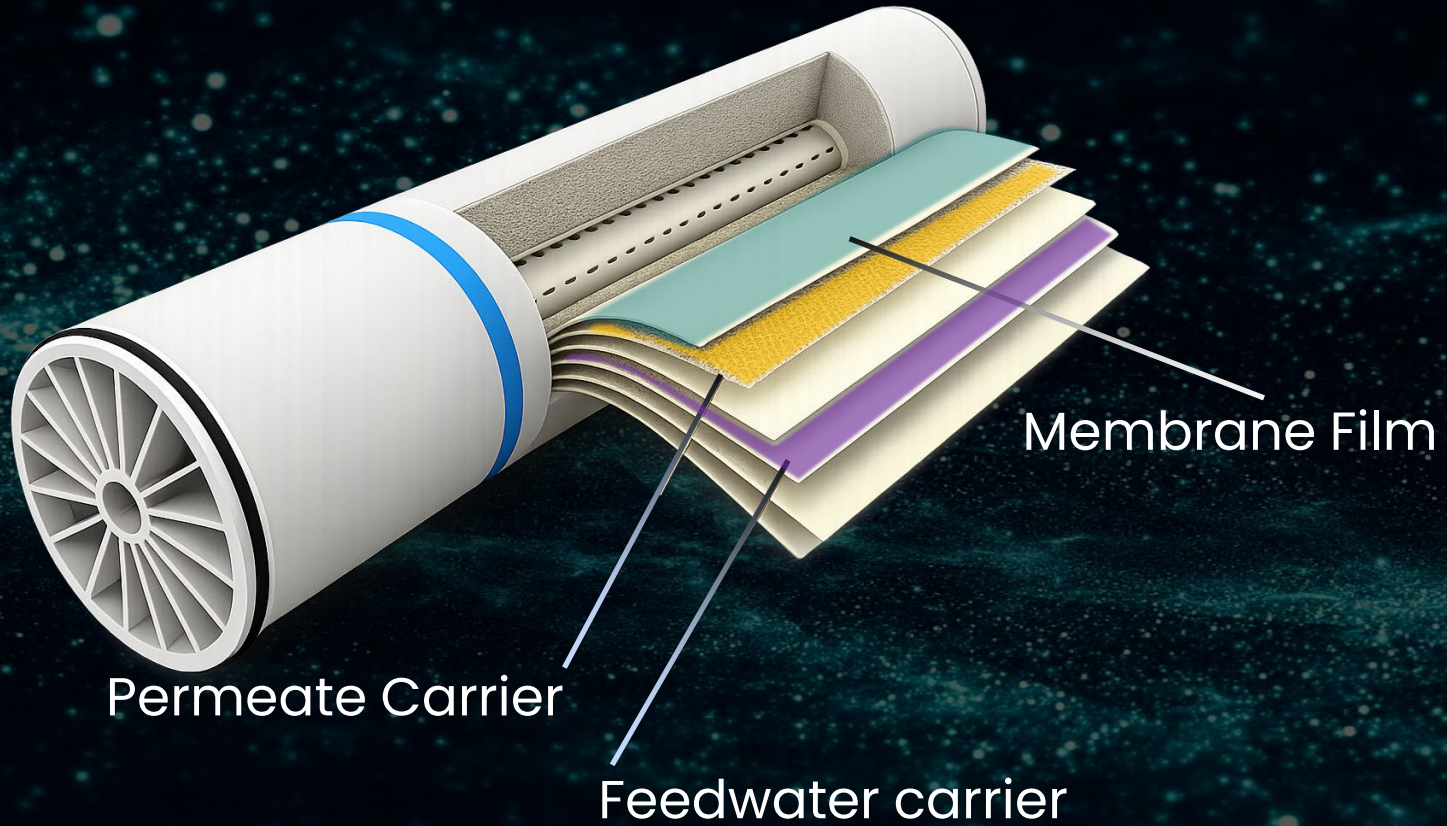
Of Earth's Water is Undrinkable



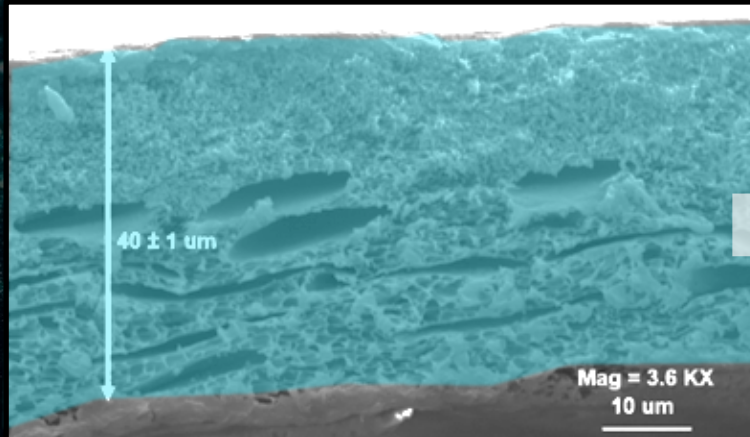
Heat +

Pressure =

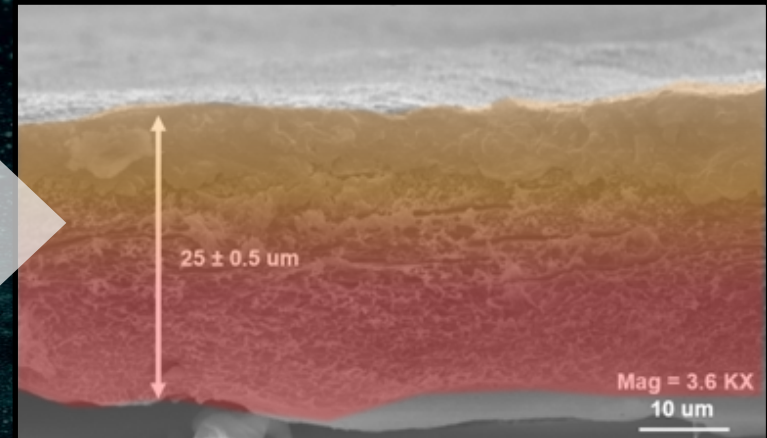
Compaction



Pristine Membrane



Compacted Membrane



A photograph of a water treatment plant interior, showing a complex network of grey pipes, blue machinery, and overhead lighting. The scene is viewed from a perspective looking down a central aisle. The text is overlaid on this background.

Up to

50%

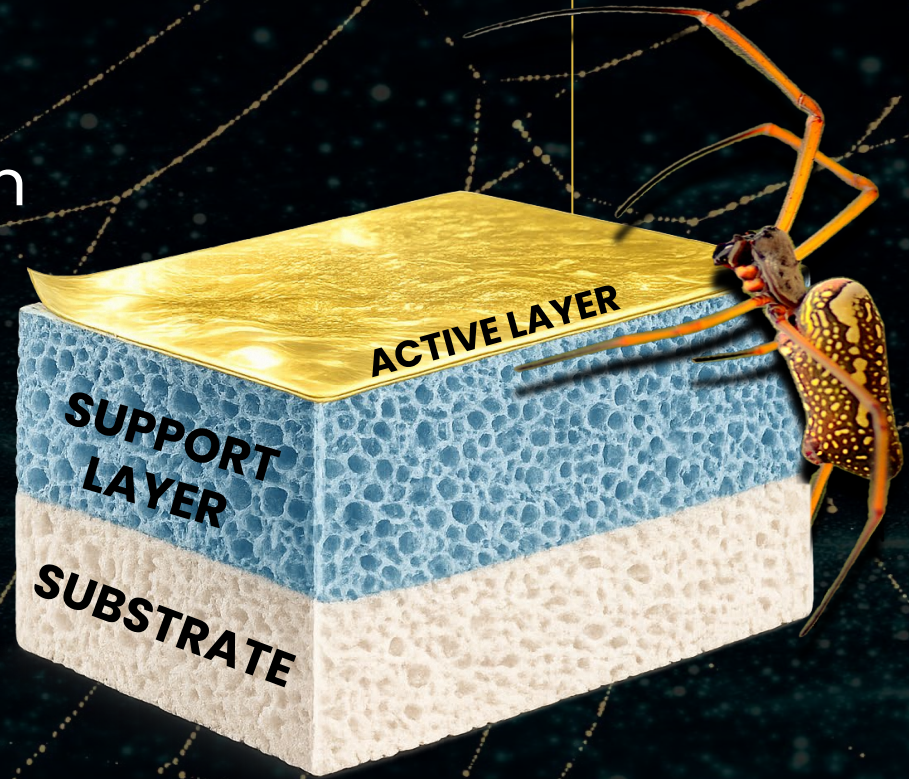
Production Capacity Loss

Introducing
NEXT-TFX compaction-resistant ultrahigh-
pressure/temperature-tolerant RO membranes



Inspired by nature. Reimagined for desalination

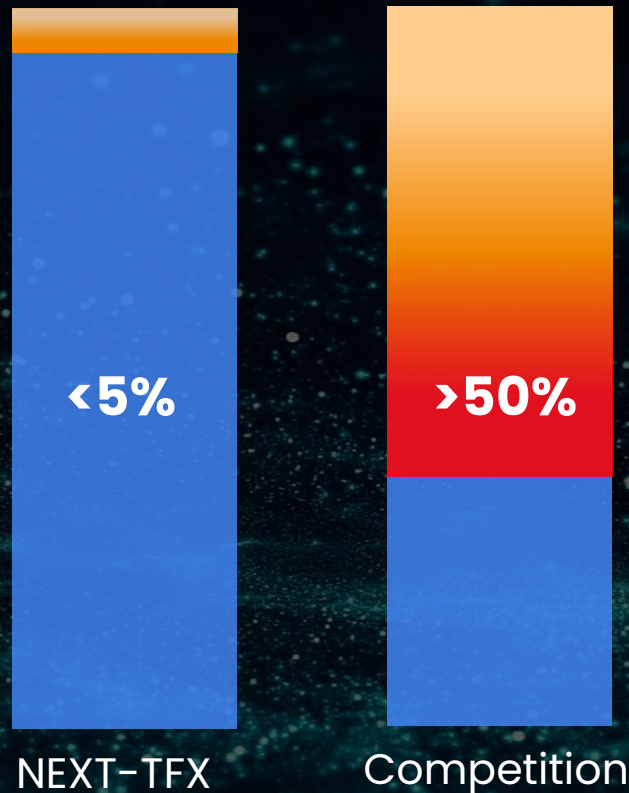
- TFX™ Biomimetic membrane modeled on spider silk
- Crosslinked thermoset network for structural integrity
- Stronger than steel, tougher than Kevlar



Compaction Loss at 120 bar

Compaction: Less than 5%
Salt Rejection: Above 99%
Heat: Up to 85°C

**Higher Recovery,
Lower Energy Cost**





**COST PARITY WITH
COMPETITORS**

**NO ADDED STEPS FOR
CUSTOMERS**

UCLA

Samueli
School of Engineering



**Globally recognized
expert in water
membrane
technologies**

Eric M.V. Hoek, Ph.D.

Professor, UCLA Samueli School of Engineering
Faculty Scientist, Lawrence Berkeley National Lab

UCLA

Samueli
School of Engineering

**NanoH2O: \$1.3B –
December 2025**



Eric M.V. Hoek, Ph.D.

Professor, UCLA Samueli School of Engineering
Faculty Scientist, Lawrence Berkeley National Lab



Saltwater Desalination



Brine Concentration

Market Segment	Estimated 2024/2025	Projected by 2030	Growth
Lithium / Critical Minerals	\$32–44 B	\$70-75 B	15-18% CAGR
Desalination	\$17-20 B	\$34–50 B	8–12% CAGR



**Mineral
Mining**



Pharma



**Data
Centers**



Produced Water

**NEXT
TFX**



Food & Beverage



Solar



January 2026

Paid pilot signed with
world's largest private
water desalination
company





February 2026
CNSI Magnify and
UCLA Anderson
Venture Accelerator



Ask: \$2M Seed Round Investment

Q1 - 2026

Finalize flat-sheet formulations for SWRO and BCRO membranes.

Q1/2 - 2027

In-field pilots of TFX-SWRO (Singapore, Middle East)

Q4 - 2028

Commercial-scale production

Pre-Seed: \$1M

Seed: \$2M

 Beyond Utility Water Ventures

Λ26 Ventures

Q3 - 2026

Prototype 4040 production and in-house testing via contract manufacturing

Q4 - 2027

In-field pilot of TFX-BCRO on produced water brine.



2.2B

Lack access to safe drinking water



Pat O'Brien

Co-founder, VP of operations



Dr. Eric Hoek

Co-founder, CEO, Inventor



Dr. Minhao Xiao

Co-Founder,
Lead Membrane Scientist

A26 Ventures



Beyond Utility Water Ventures



MAGNIFY
at CNSI



ViT
VETSINTECH

VENTURE

ACCELERATOR

AT UCLA ANDERSON

www.next-tfx.com

**NEXT
Tfx**